

STI Stopper®



KEY FEATURES

General Information

- Protective cover helps prevent malicious or accidental false alarms.
- Three year guarantee against breakage of polycarbonate in normal use (one year on electromechanical and electronic components).

Design

- Prevents false alarms, without hindering legitimate operation of a manual call point in the event of an emergency.

Construction

- Tough polycarbonate housing can withstand the severest of knocks.

Installation

- A simple 4 fixing installation can retrofit over existing device.
- Can accommodate flush or surface mounted applications.
- Polycarbonate tested -40°C (-40°F) to 49°C (120°F).

Electronics

- Optional 12-24 VDC powered units.
- Optional integral sounder powered by a 9V PP3 battery.

Options

- Break seal facility option for added security.
- Available in a range of colours.
- Custom labelling available.

PRODUCT OVERVIEW

Protective cover helps prevent malicious or accidental false fire alarms. This unique device has helped prevent false fire alarms around the world for decades, without restricting legitimate operation of devices such as fire alarm break glass call points. It is ideal for schools, colleges, hospitals, nursing homes, hotels and all public buildings where there is a history or a threat of false fire alarms.

HOW IT WORKS

The Stopper consists of a clear, tamperproof, tough polycarbonate cover and frame that retrofits over the break glass call point. When lifted to gain access to the break glass, its optional battery powered integral sounder emits a piercing 95 dB (at 1 metre). Immediate attention is drawn to the area and the prankster will either run or be caught.



For more information, call +44 (0)1527 520 999 or visit www.sti-europe.com



**Safety Technology
International (Europe) Ltd**

STI Stopper®

Dimensions and Technical Information

MODELS AVAILABLE

STI-6530	Stopper, flush mount without integral sounder
STI-6531	Stopper, surface mount without integral sounder (includes 30mm spacer)
STI-6532	Stopper, flush mount with integral sounder
STI-6533	Stopper, surface mount with integral sounder (includes 30mm spacer)

Accessories:

STI-6503	30mm spacer (supplied with STI-6531 & STI-6533)
STI-6504	50mm spacer
STI-C024	Backplate (for irregular surfaces)
STI-BS	Break seals (quantity 10)
E009	Service pin

Options:

COLOURS AVAILABLE	For green, blue or yellow add -G, -B or -Y (e.g. STI-6530-G for Stopper, flush mount without integral sounder in green)
--------------------------	---

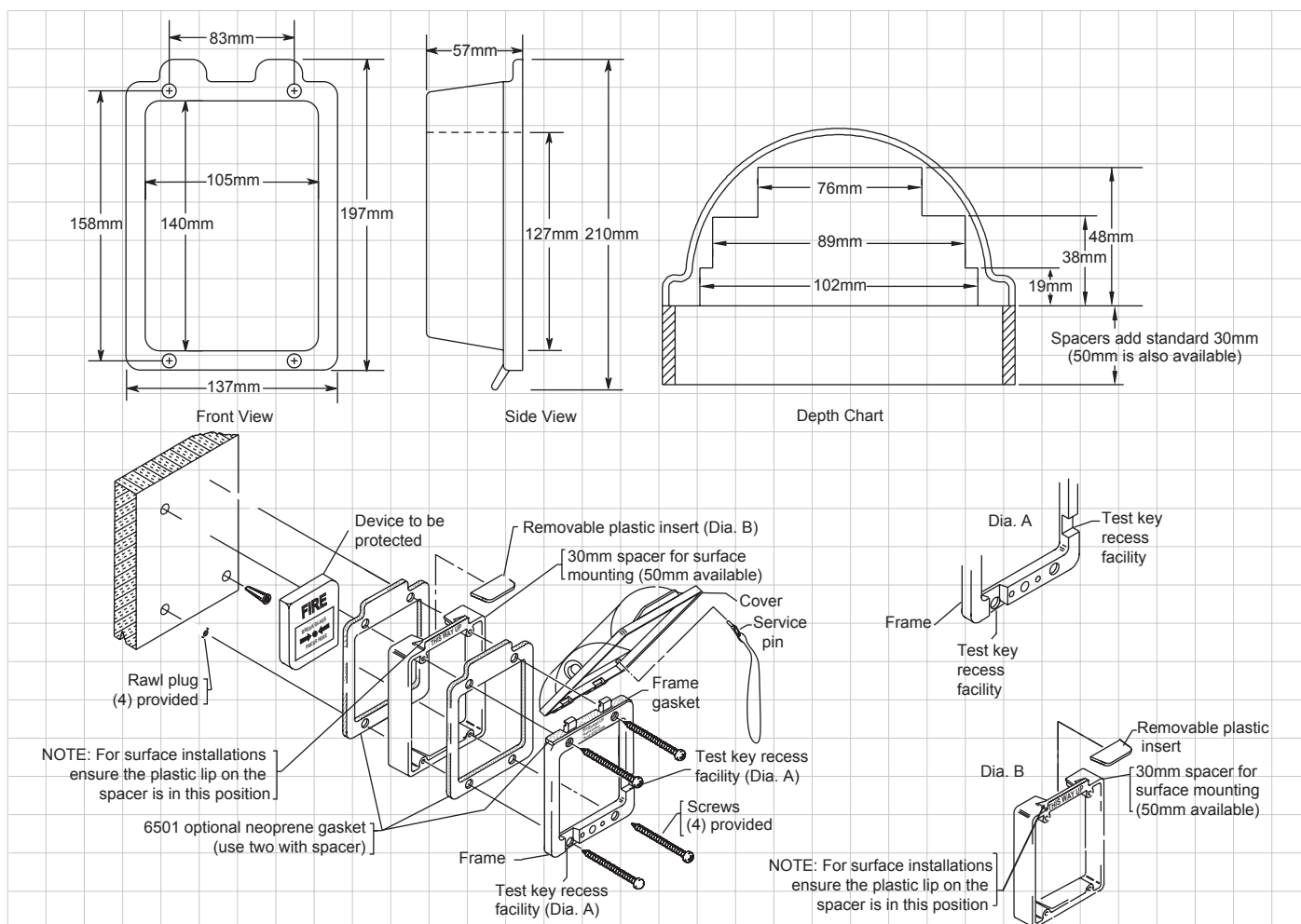
SECURITY	Break seal facility add -BS, For Lock add -L
-----------------	---

NB:

The Stopper is supplied in red with operating instructions: 'IN CASE OF FIRE - LIFT COVER BREAK GLASS'.
Alternative and custom markings available.

IMPORTANT NOTICE

Instructions should be provided to avoid the unlikely possibility that persons, in the event of a real fire, lift the Stopper cover and think that they have set off the fire alarm. All personnel should be reminded that the Stopper is a protective cover and it is necessary to lift the cover and "Break Glass" in the case of a real fire.



**Safety Technology
International (Europe) Ltd**

UK Office

Unit 49G Pipers Road
Park Farm Industrial Estate
Redditch, Worcestershire
B98 0HU, England

Tel: +44 (0)1527 520 999
Fax: +44 (0)1527 501 999
info@sti-europe.com
www.sti-europe.com

USA Head Office

2306 Airport Road
Waterford, Michigan
48327 - 1209

Tel: +248-673-9898
Fax: +248-673-1246
Toll-free: 0800-888-4STI
info@sti-usa.com
www.sti-usa.com